



# imAGEin

## ERASMUS MUNDUS JOINT MASTER



A unique two-year  
international master's  
programme in the  
**BIOLOGY OF AGEING**



UNIVERSITY  
OF COLOGNE

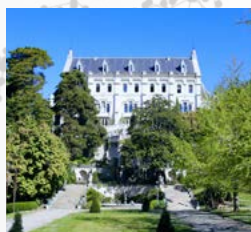


UNIVERSIDAD DE SEVILLA

12 90

UNIVERSIDADE DE  
COIMBRA

SCIENCES  
SORBONNE  
UNIVERSITÉ



- 🎓 **15 Scholarships** available per cohort
- 🎓 **First cohort starts in Sep. 2025**
- 🎓 **An ambitious scientific program and a unique opportunity to travel and study abroad**



# Partner Universities

You can choose one of the imAGEin partner universities to start your master (except Sorbonne Université). After the first year you will choose a different Partner University to pursue your studies according to the domain of specialisation of your Career Plan.



UNIVERSITY OF COLOGNE

**UNIVERSITY OF COLOGNE & CECAD**

*Genetics and Biology of Ageing and Regeneration*



SCIENCES SORBONNE UNIVERSITÉ

**SORBONNE UNIVERSITÉ**

*Biology and Pharmacology of Ageing and Longevity*



UNIVERSITÉ CÔTE D'AZUR

**UNIVERSITÉ CÔTE D'AZUR**

*Biomedical and Computational Sciences in Ageing*



UNIVERSIDADE DE COIMBRA

**UNIVERSIDADE DE COIMBRA**

*Disease mechanisms and Innovative Therapies in Ageing*



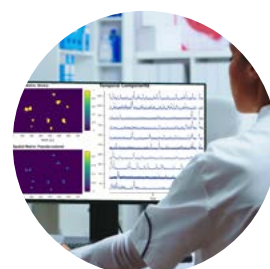
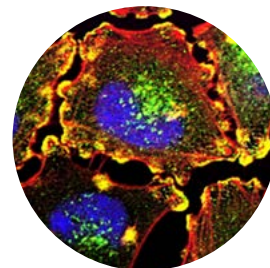
UNIVERSIDAD DE SEVILLA

**UNIVERSIDAD DE SEVILLA**

*Biomedical Research and Molecular Genetics & Biotechnology*

# Mandatory International Mobility

All imAGEin curricula include one compulsory physical mobility between two countries, different from the student's country of residence, being structured into two blocks of one year each.







# imAGEin

is an Innovative 2 years joint Master Programme designed to educate the next generation of leading researchers, translational scientists, entrepreneurs, and professionals in the biology of ageing

**Understanding the biology of ageing :  
A global challenge**

Long-term projections suggest that if population ageing is not addressed, public sector finances will face growing strain over the next 50 years due to rising age-related expenditures. As a result, demographic and economic trends position the biology of ageing as a major challenge for modern scientific research.

Advancing this field will be essential for developing innovative, sustainable solutions to improve healthspan while alleviating the economic burden of ageing populations worldwide.

**4 semesters  
within 5 european  
leading universities**

## Create Your Own Path

After the selection process, each student will be admitted in one of the four universities proposed for the first year, in respect to the student's Personalized Training Plan and available slots per imAGEin partner.

The multiple possible tracks in imAGEin ensure that students will gather original skill sets and build professional profiles that belong to three main paths:

### PATH 1 : FUNDAMENTAL RESEARCH

YOUR CHOICE OF MOBILITIES		YOUR PROFESSIONAL PROFILE
Year 1 University	Year 2 University	<ul style="list-style-type: none"> <li>• Apply to Doctoral Studies</li> <li>• Laboratory Manager</li> <li>• Research Engineer</li> <li>• Product Development Scientist</li> <li>• Quality Control / Assurance Specialist</li> </ul>
COIMBRA	COLOGNE	
COLOGNE	COIMBRA	
CÔTE D'AZUR	COLOGNE	
COLOGNE	SORBONNE	
CÔTE D'AZUR	COIMBRA	

### PATH 2 : APPLIED BIOMEDICAL RESEARCH

YOUR CHOICE OF MOBILITIES		YOUR PROFESSIONAL PROFILE
Year 1 University	Year 2 University	<ul style="list-style-type: none"> <li>• Apply to Doctoral Studies</li> <li>• Wellness Program Developer</li> <li>• Start-Up Founder In Biotech</li> <li>• Health Advisor For Aging Populations</li> <li>• Aging Specialist In Public Health</li> <li>• Healthcare Data Consultant</li> <li>• Biomedical Data Analyst</li> </ul>
COIMBRA	CÔTE D'AZUR	
COIMBRA	SORBONNE	
CÔTE D'AZUR	SEVILLE	
SEVILLE	COIMBRA	
SEVILLE	COLOGNE	
SEVILLE	SORBONNE	

### PATH 3 : INNOVATION AND BIOTECHNOLOGY

YOUR CHOICE OF MOBILITIES		YOUR PROFESSIONAL PROFILE
Year 1 University	Year 2 University	<ul style="list-style-type: none"> <li>• Apply To Doctoral Studies</li> <li>• Innovation Consultant</li> <li>• Digital Health Innovator</li> <li>• Consultant In Biomedicine</li> <li>• Interdisciplinary Project Manager</li> <li>• Venture Capital Analyst</li> <li>• Translational Researcher</li> </ul>
COIMBRA	SEVILLE	
COLOGNE	CÔTE D'AZUR	
SEVILLE	CÔTE D'AZUR	
COLOGNE	SEVILLE	

..... **15 scholarships available**  
per cohort for selected students

**For each cohort, the imAGEin Erasmus Mundus Joint Master Programme offers 15 scholarships (1400€/month for 2 years) for selected students.**

Admitted students who are not selected for the EMJM will be enrolled as imAGEin students with the following participation costs covering local tuition fees, student insurance and joint education activities:

- European Students: 5000€/full programme
- Non-European Students: 10 000€/ full programme



# Why join the imAGEin Erasmus Mundus Joint Master?

**A unique partnership** between 5 leading universities in ageing biology



**Innovative study tracks** to develop professional profiles in fundamental research, applied biomedical research, innovation and biotechnology



**An international, multicultural, diverse and inclusive** multidisciplinary training programme



**Joint education with seminars** and thematic weeks at different partner universities offered to all students

**Intensive training** in research laboratories, hospitals or industry



**Amazing opportunity to enjoy academic mobility across Europe**

**Multiple diplomas** with international recognition



**Website & Application**



  @imagein.erasmus.mundus

 imagein-erasmus-mundus

 [life.univ-cotedazur.eu/international/imagein](http://life.univ-cotedazur.eu/international/imagein)

**imAGEin**

 UNIVERSITÉ  
CÔTE D'AZUR



UNIVERSITY  
OF COLOGNE

1290  
UNIVERSIDADE  
DE COIMBRA

UNIVERSIDAD  
DE SEVILLA  
UNIVERSIDAD DE SEVILLA

 SCIENCES  
SORBONNE  
UNIVERSITÉ

 Co-funded by  
the European Union